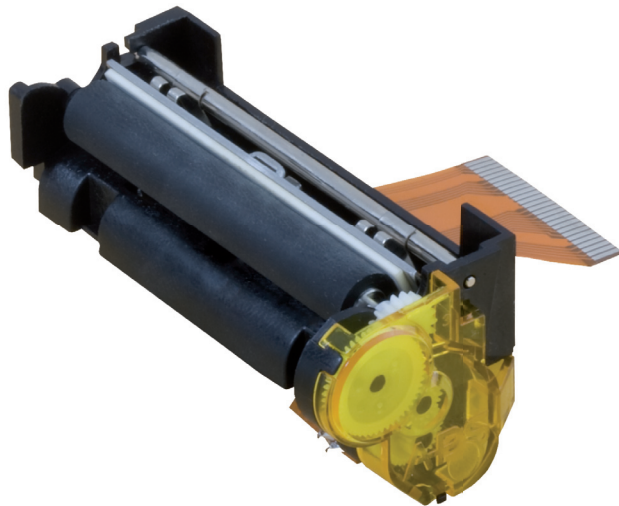


Paper



58 mm



Specifications

	ELM205-LV	ELM205-HS	ELM208-LV	ELM208-HS
Print method	Thermal	Thermal	Thermal	Thermal
Number of dots	384	384	384	384
Resolution (dots/mm)	8	8	8	8
Printing width (mm)	48	48	48	48
Paper width (mm)	58	58	58	58
Max. paper thickness (μ)	80	80	80	80
Paper loading	Easy loading	Easy loading	Easy loadAng	Easy loading
Printing speed (mm/s)	70	85	70	85
Paper detection	Opto sensor	Opto sensor	Opto sensor	Opto sensor
Temperature detection	Thermistor	Thermistor	Thermistor	Thermistor
Head-up or Cover-open detection	Combined with opto sensor	Combined with opto sensor	Combined with opto sensor	Combined with opto sensor
Voltage range (Logic/Head)	2.7-5.25 / 2.7-7.2	2.7-5.25 / 4.5-8.5	3-5.25 / 3-6.6	3-5.25 / 5.5-9.5
Dot resistance (Ohm)	123 ± 4%	176 ± 4%	116 ± 10%	165 ± 10%
Energy per dot (mJ)	0.15	0.13	0.14	0.22
Stepper motor (Ohm)	Bipolar (12)	Bipolar (12)	Bipolar (12)	Bipolar (12)
Weight (g)	40	40	35	35
Life/reliability	50km/100M pulses	50km/100M pulses	50km/100M pulses	50km/100M pulses
Operating temperature (C°)	0 to 50 non cond.	0 to 50 non cond.	0 to 50 non cond.	0 to 50 non cond.
Operating humidity (%)	20 to 85 non cond.	20 to 85 non cond.	20 to 85 non cond.	20 to 85 non cond.
Dimensions (WxDxH mm)	67.5x30.7x30.8	67.5x30.7x30.8	67.5x30.7x30.8	67.5x30.7x30.8

Features

- Compact design - low weight
- No loose wiring - a single flex-cable houses all wiring
- Ergonomic design - centered paper path allows uniform and aesthetic housing design
- High reliability due to its patented easy loading design
- Print speed up to 85 mm/s
- Low cost
- Shorter flex cable (ELM218)

Applications

- Portable printers and terminals
- Hand held terminals
- Cash registers
- Fiscal printers
- Calculators
- Measuring instruments and analyzers
- POS (point of sale)
- EFTs (electronic funds transfer)
- Data terminal devices
- Medical equipments
- Taxi meters

Options

Chip set



CSM05

